



At Your Service

PROVIDING
ELECTRIC, GAS, WATER AND
SANITARY SEWER SERVICES

August 2018

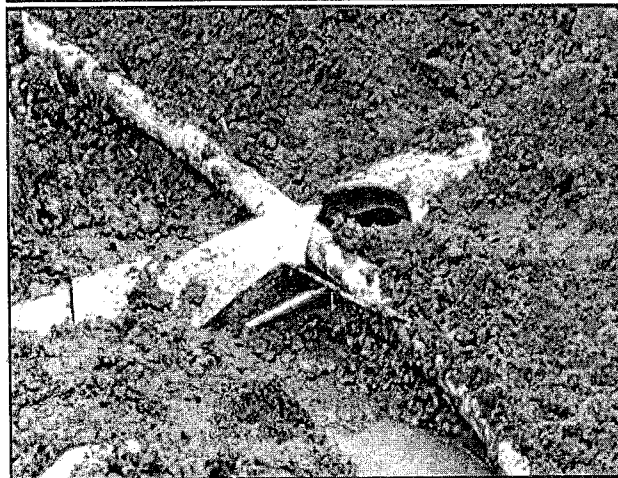
Cross Bore Awareness

More and more utilities and their contractors are installing underground utilities using trenchless technology. Before using such technology, excavators are required to call Diggers Hotline at 811 and request the marking of underground utility lines in the excavation area. Below are the color codes that associate a utility service with its corresponding color for marking. After existing utility lines are marked, excavators may dig and find these utility lines before they bore over or under the lines. If sewer lines are not marked or the excavators do not follow industry best practices for trenchless excavation rules, excavators may bore through the sewer lines and leave a utility line (natural gas pipe, electric or telecommunication cables) inside the sewer line without knowing it.

| <u>UTILITIES</u> | <u>COLOR</u> |
|---|--------------|
| Proposed Excavation | White |
| Electric Power Lines, Cables, Conduit and Lighting Cable | Red |
| Potable Water | Blue |
| Steam, Condensate, Gas or Oil Compressed Air | Yellow |
| Telecommunications, Alarm or Signal Lines, Cables or Conduit | Orange |
| Temporary Survey Markings | Pink |
| Sewer and Storm Drains | Green |
| Chilled Water, Reclaimed Water, Irrigation and Slurry Lines | Purple |
| OTHER | Light Blue |

Serious Danger

A utility line in a sewer line (cross bore) can go undetected for months or years. Eventually, a sewer backup develops, and a plumber is called to remove the blockage. Plumbers often use a mechanical rotary device to root out the blockage, which almost always damages the utility line bored through the sewer line. If an electric line is cut, the plumber runs the risk of electrocution. If a gas line is damaged, natural gas can migrate through the sewer lines into homes and buildings and result in a major accident that may involve death, injury and/or property damage. If other utilities are damaged, telephone, television or internet service could be disrupted.



Safety Precautions

Before cleaning out a sewer line, remember to:

Inquire with owner, occupant or building maintenance people to determine-

- Location of sewer facilities such as clean outs.
- Recent excavations to install utility lines. If markings for existing underground utility lines cross the sewer line path, a cross bore may be causing the blockage.
- If evidence of recent excavation or marking for a utility line is the same distance from the building as the blockage, a cross bore may be causing the blockage.

If you reasonably suspect or determine a blockage is caused by a cross bore:

- Do not attempt to clear blockage with a mechanical device.
- Get help from utility facility owner.

If a cross bore is discovered:

- Stop all work.
- Contact utility facility if not already on site.

The Cross Bore Safety Association has more information at www.crossboresafety.org

UTILITY BOARD

Jack Schreiner, *Chairman*
Bill Hitesman, *Vice Chairman*
Shayne Raitt
Shawn Hartmann Joanne Seberg

UTILITIES MANAGER

Kevin Johnson



HASTINGS
UTILITIES

P.O. Box 289 • 1228 N. Denver
Hastings, NE 68902 • 402-463-1371
www.hastingsutilities.com